



Description:

Laser displacement sensor, 655nm laser source, metal housing, LED display and button settings, rich interface. Suitable for pharmaceutical, packaging, automotive, non-standard equipment and others.

Features:

- LED digital display + teaching function
- Strong resistance to ambient light, compact size
- Analog/switch dual output

Type:

Type	Distance	Beam	Output	Resolution	Connection	Wiring
OSM40-KL35CBLIU6	25...35mm	Red laser	NPN/PNP+analog mA / V	0.001mm	2m cable	Fig.1
OSM40-KL35CBLIU6Q12.1	25...35mm	Red laser	NPN/PNP+analog mA / V	0.001mm	M12 connector	Fig.1
OSM40-KL70CBLIU6	35...70mm	Red laser	NPN/PNP+analog mA / V	0.01mm	2m cable	Fig.1
OSM40-KL70CBLIU6Q12.1	35...70mm	Red laser	NPN/PNP+analog mA / V	0.01mm	M12 connector	Fig.1
OSM40-KL160CBLIU6	60...160mm	Red laser	NPN/PNP+analog mA / V	0.01mm	2m cable	Fig.1
OSM40-KL160CBLIU6Q12.1	60...160mm	Red laser	NPN/PNP+analog mA / V	0.01mm	M12 connector	Fig.1
OSM40-KL300CBLIU6	100...300mm	Red laser	NPN/PNP+analog mA / V	0.1mm	2m cable	Fig.1
OSM40-KL300CBLIU6Q12.1	100...300mm	Red laser	NPN/PNP+analog mA / V	0.1mm	M12 connector	Fig.1
OSM40-KL800CBLIU6	150...800mm	Red laser	NPN/PNP+analog mA / V	0.1mm	2m cable	Fig.1
OSM40-KL800CBLIU6Q12.1	150...800mm	Red laser	NPN/PNP+analog mA / V	0.1mm	M12 connector	Fig.1
OSM40-KL35CB6/485	25...35mm	Red laser	NPN/PNP+485	0.001mm	2m cable	Fig.2
OSM40-KL35CB6Q12.1/485	25...35mm	Red laser	NPN/PNP+485	0.001mm	M12 connector	Fig.2
OSM40-KL70CB6/485	35...70mm	Red laser	NPN/PNP+485	0.01mm	2m cable	Fig.2
OSM40-KL70CB6Q12.1/485	35...70mm	Red laser	NPN/PNP+485	0.01mm	M12 connector	Fig.2
OSM40-KL160CB6/485	60...160mm	Red laser	NPN/PNP+485	0.01mm	2m cable	Fig.2
OSM40-KL160CB6Q12.1/485	60...160mm	Red laser	NPN/PNP+485	0.01mm	M12 connector	Fig.2
OSM40-KL300CB6/485	100...300mm	Red laser	NPN/PNP+485	0.1mm	2m cable	Fig.2
OSM40-KL300CB6Q12.1/485	100...300mm	Red laser	NPN/PNP+485	0.1mm	M12 connector	Fig.2

Type:

Type	Distance	Beam	Output	Resolution	Connection	Wiring
OSM40-KL800CB6/485	150...800mm	Red laser	NPN/PNP+485	0.1mm	2m cable	Fig.2
OSM40-KL800CB6Q12.1/485	150...800mm	Red laser	NPN/PNP+485	0.1mm	M12 connector	Fig.2
OSM40-KL35CB6Q12.1/IO	25...35mm	Red laser	NPN/PNP+IO-Link	0.001mm	M12 connector	Fig.3
OSM40-KL70CB6Q12.1/IO	35...70mm	Red laser	NPN/PNP+IO-Link	0.01mm	M12 connector	Fig.3
OSM40-KL160CB6Q12.1/IO	60...160mm	Red laser	NPN/PNP+IO-Link	0.01mm	M12 connector	Fig.3
OSM40-KL300CB6Q12.1/IO	100...300mm	Red laser	NPN/PNP+IO-Link	0.1mm	M12 connector	Fig.3
OSM40-KL800CB6Q12.1/IO	150...800mm	Red laser	NPN/PNP+IO-Link	0.1mm	M12 connector	Fig.3

Technical Data:

Supply voltage	10-30VDC
Ripple voltage	≤10%
No-load current	≤150mA
Power	1.5W
Analog output	4...20mA, 0...5V or 0...10V
Switch output	NPN/PNP
Communication type	RS485, IO-Link
Light source	655nm laser source
Protection circuit	Reverse polarity protection, short circuit protection, Overload protection
Response time	1.5ms / 5ms / 10ms switchable
Repeatability	0.05mm@35...70mm; 0.1mm@60...160mm; 0.5mm@150...400mm; 1mm@400...600mm; 3mm@600...800mm
Spot diameter	1mm@150mm; 2mm@600mm
Housing material	316L
Ambient temperature	-10 C -45 C
Voltage resistance	1000V/AC 50/60Hz 60s
Insulation impedance	≥50MΩ (500VDC)
Shock resistance	Complex amplitude 1.5mm 10... 50Hz (2hr X, Y,Z respectively)
Impact resistance	500m/S ² (50G) 3 times X,Y,Z respectively
Protection class	IP67
Dimensions	60.4*20*35.3mm

Interface output:

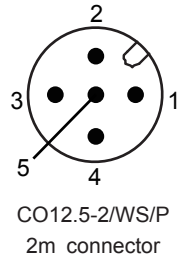


Fig.1

Serial number	Function	Core color of cable type	Core color of connector type
1	Power +	BN	BN
2	Analogue output	GY	WH
3	Power -	BU	BU
4	NPN/PNP	BK	BK
5	Enable input	PK	GY

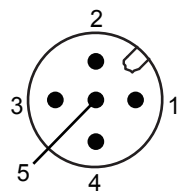


Fig.2

Serial number	Function	Core color of cable type	Core color of connector type
1	Power +	BN	BN
2	485B	GY	WH
3	Power -	BU	BU
4	NPN/PNP	BK	BK
5	485A	PK	GY

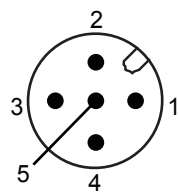
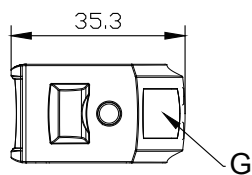
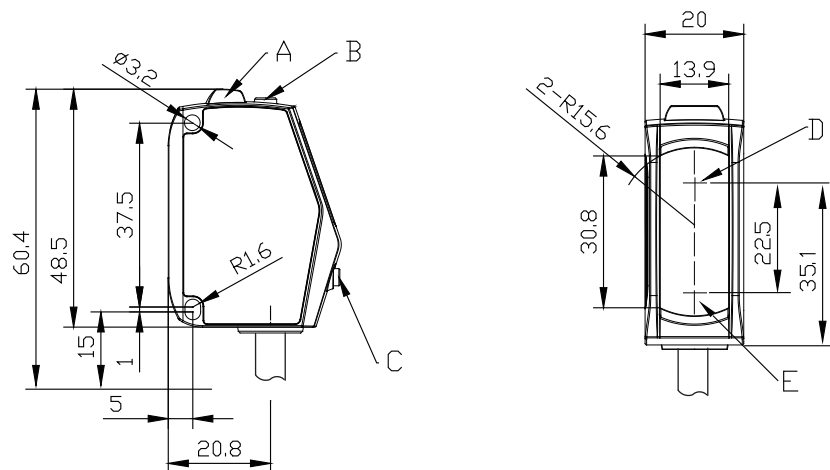
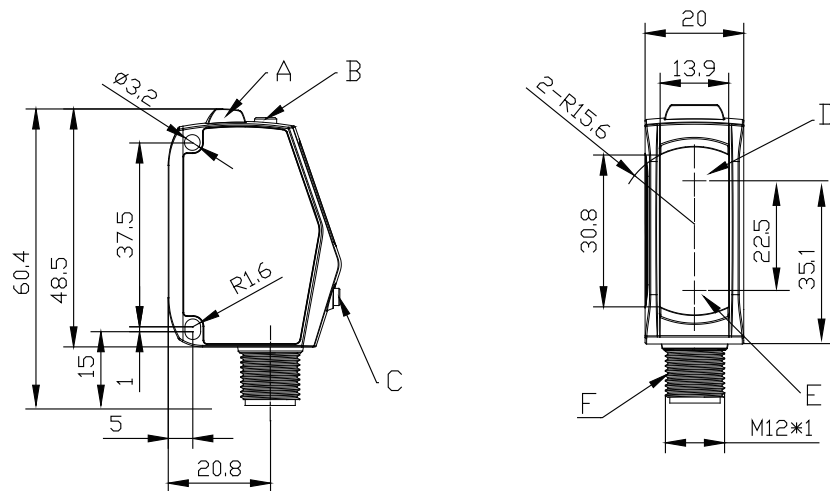


Fig.3

Serial number	Function	Core color of connector type
1	Power +	BN
2	IO-Link-DIO	WH
3	Power -	BU
4	IO-Link-C/Q	BK
5	NPN/PNP	GY

Dimensions:



- A alarm indicator
- B function setting button
- C function adjustment button
- D emitting
- E receiving
- F M12*1 connector
- G LED display

ELCO Industrie Automation GmbH
Benzstrasse 7
71720 Oberstenfeld
Deutschland
E-Mail: info@elco-automation.de



www.elco-automation.de

C+R Automations- GmbH

Nürnberger Straße 45
90513 Zirndorf

Tel. +49 (0)911 656587-0
E-Mail: info@crautomation.de
www.crautomation.de